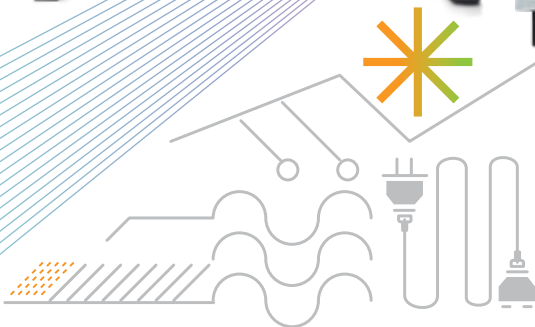


Presenting

**AFM-HT** by

**AFM-PLUS**  
S E R I E S

Aluminium ESD Table  
with Adjustable Height



— +



ESD range:  $10^6$ - $10^7$  ohms  
IEC 61340-5-1 & ANSI ESD S20.20.2021

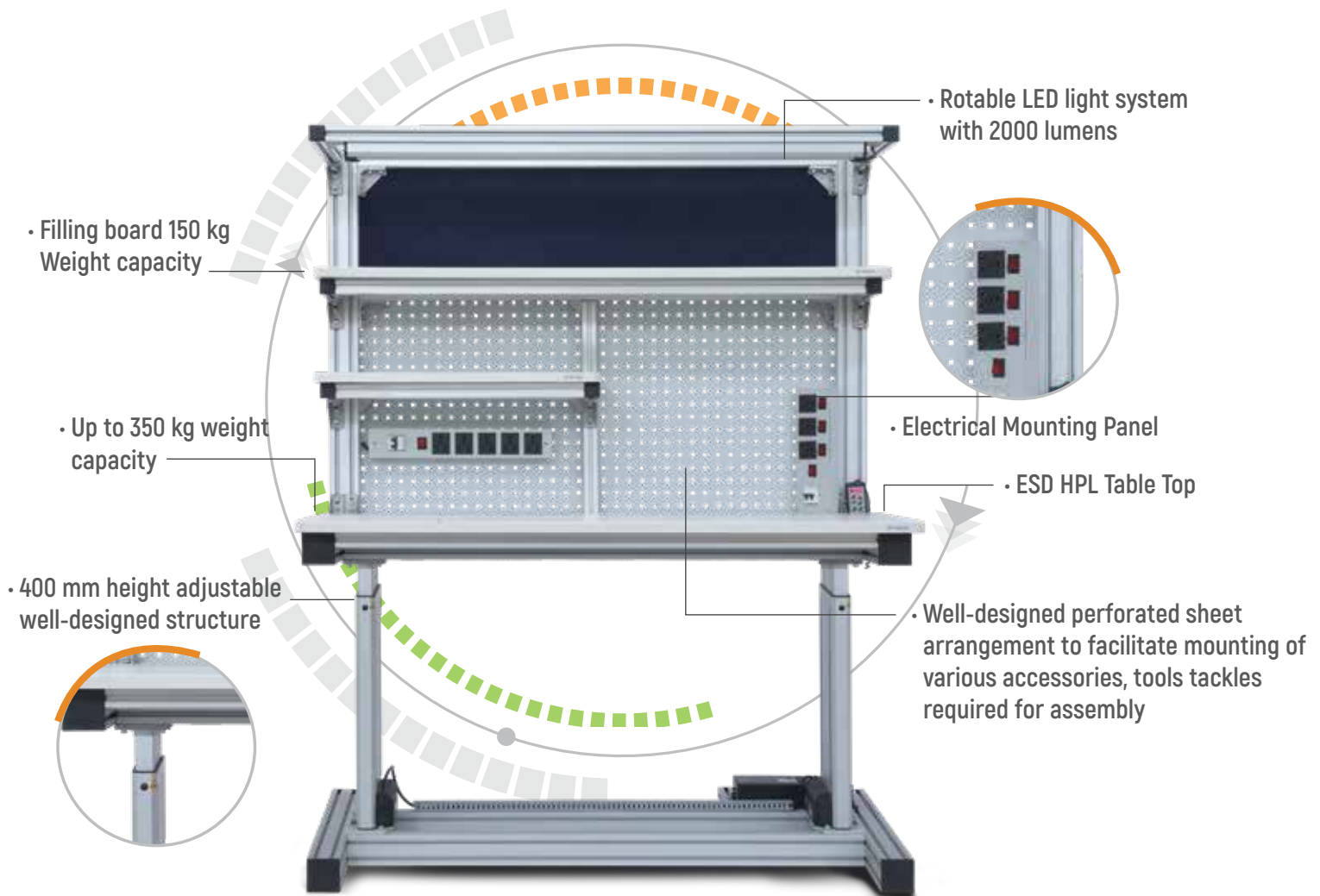


**EXPORTING  
GLOBALLY**

# AFM-HT

## Aluminium ESD Table with Adjustable Height

**MODULAR &  
CUSTOMIZABLE**



- Electrical mounting panel placed vertically & horizontally.
- These are mainly used for mains sockets, MCB, Fuses, Indication lamp, Table ON/OFF and Emergency OFF.
- The electrical mounting panel can also be used for mounting isolated soldering station, fixed power supplies like +/- 5 V, 12V, 24V, with current ratings like 1 Amp, 2 Amp, etc.
- All tables are designed to fit magnifying glass, monitor arm, keyboard tray, bottle holder & ESD footrest.
- All tables come with LED lights providing 2000 lumens.
- Provision for LED light below the bottom shelf.
- Height adjustable shelves.

### Contact Us:

#### Messung Global Connect Pvt. Ltd.

**Pune:** World Trade Center, Tower 'B', Office No. 420, Kharadi, Pune 411 014. | Tel: +91 20 4696 1100

**Mumbai:** Unit No. 303, Third Floor, Meadows, Sahar Plaza Complex, J.B. Nagar, Andheri (E), Mumbai 400 059. | Tel: +91 22 2835 5066

**Bengaluru:** No 35A, 2nd cross, Kempamma Layout, Peenya industrial Area, 3 Rd stage Bangalore - 560 096. | Tel: +91 99860 34057

**Website:** [www.messungworkplacetechnology.com](http://www.messungworkplacetechnology.com)